



AI Enabled Shipping Platform for
ECommerce Business D2C Sellers



website:

shipeasy.tech



ShipEasy is an AI enabled shipping platform for eCommerce Business D2C sellers.

Our Mission is to create a user-friendly platform that empowers sellers with cutting-edge technical tools and ensures they have seamless access to our dedicated support team, enabling them to thrive in a competitive marketplace.

Our vision is to become the global go-to platform for both branded and non-branded direct-to-consumer (D2C) sellers, revolutionizing their shipping experience and amplifying their brand presence to connect with a broader customer base.

About the Company

Easy to Ship , Easy to Grow



Market Size & Target

"The Indian eCommerce market for direct-to-consumer (D2C) brands was valued at approximately USD 5 billion in 2022. It is forecasted to experience significant growth, projected to exceed USD 22 billion by 2027. This growth represents a robust compound annual growth rate (CAGR) of 15%. Notably, in the eCommerce sector, shipping costs typically represent 10-15% of the total order value. This underscores the critical role of efficient shipping solutions like ShipEasy.tech in reducing operational costs and enhancing profitability for D2C sellers."

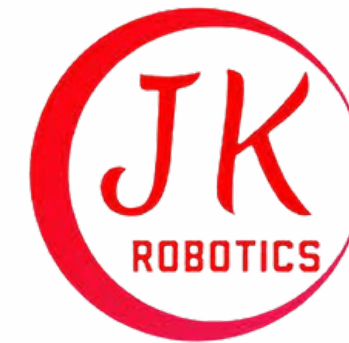
"India stands as a major player in the global e-commerce scene, boasting the third-largest digital shopping base worldwide, following only the United States and China. With over 600 million internet users and approximately 185 million active online shoppers, the country offers a vast and rapidly growing market for direct-to-consumer brands. This expansive digital audience underscores the critical need for innovative solutions like ShipEasy.tech, which are designed to optimize shipping efficiencies and enhance the overall e-commerce experience."

"This financial year, our objective is to seamlessly manage daily shipping volumes of 20,000 across more than 400 sellers. Our primary goal is achieving 100% customer retention, supporting our partners in enhancing their brand value and reaching new milestones. Looking ahead to the next financial year, we aim to significantly expand our operations, targeting daily shipping volumes of 50,000 with over 1,000 sellers."

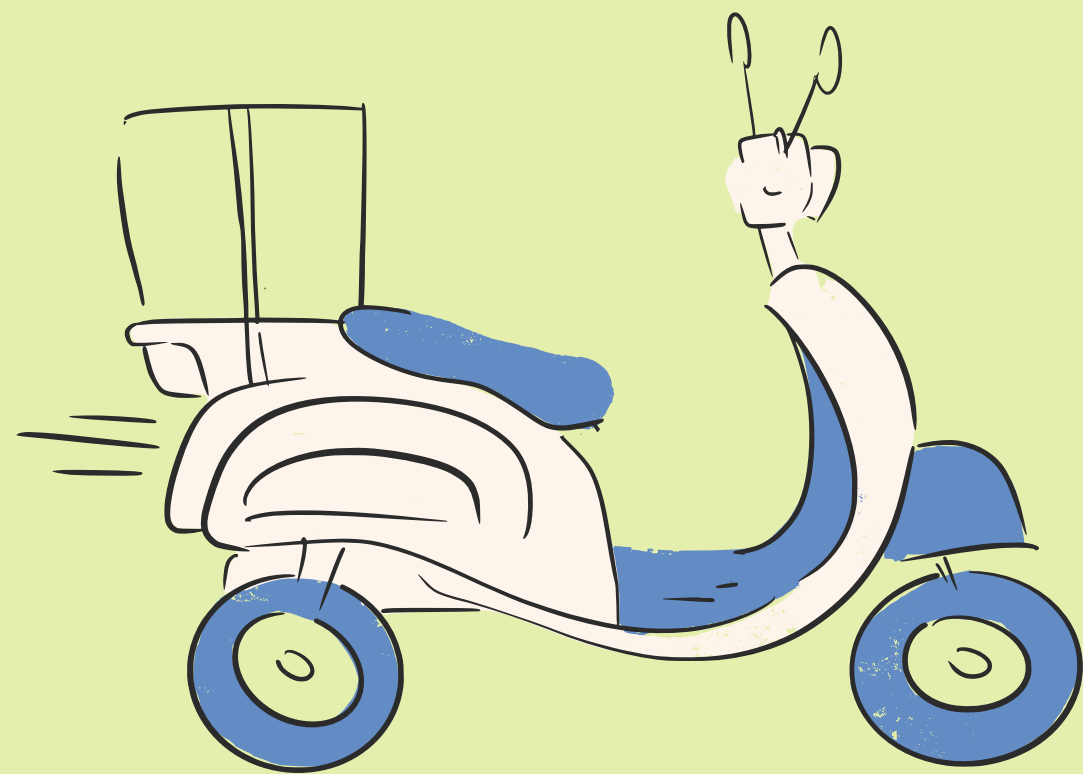


Brands & Partners

25000+ Shipments handled on platform in every single day



We are at your service



B2C Air & Surface Shipping

Ai Enabled System for enahncing your delivery experience

B2B shipping

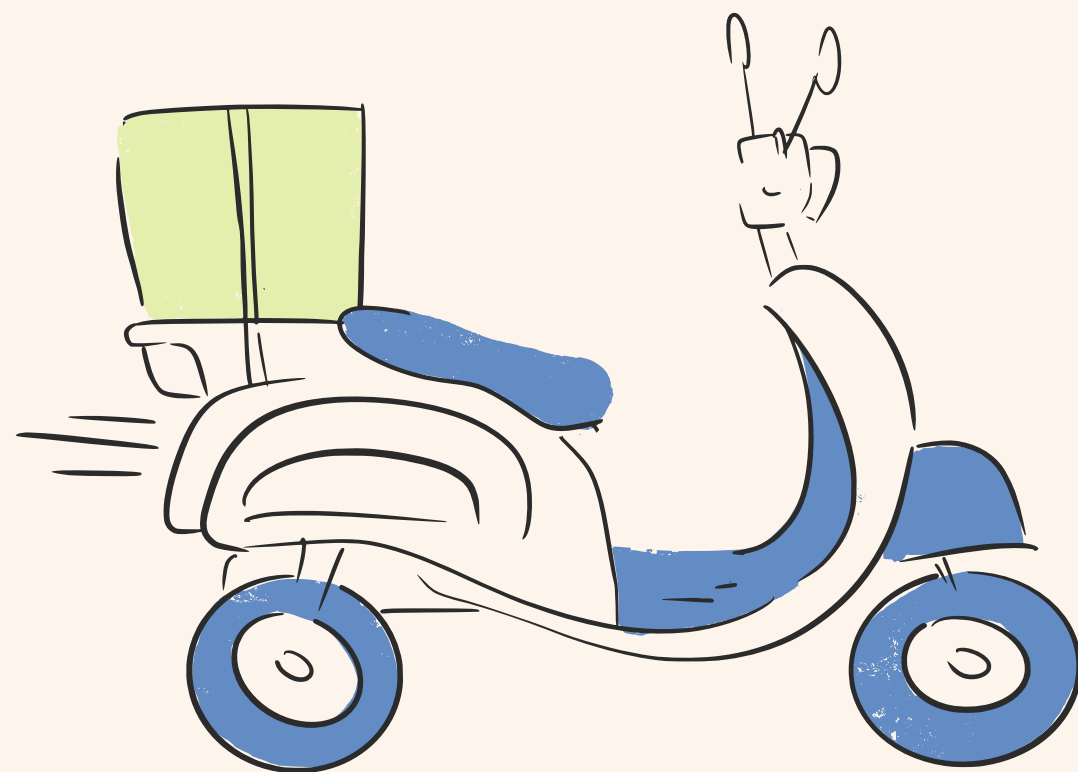
Fastest shipping solution for your B2B Orders

International Shipping

Easily ship international cargos with less documntation and hassle.

What we do

End to End Shipping Solution For
D2C Brands



- Seamlessly sync order from your Ecom site to Shipping panel
- Compare Price For Various Courier Partner
- RVP in is just one click
- Hassle free COD Remittance checking
- Small or big, 1 o 1 Support for all sellers.

One Click Website Integration

HASSLE FREE WEBSITE INTEGRATION, WITH
DIFFRENT PLATFORMS

WOO **COMMERCE**

 volusion

WIX.com

 **shopify**

 **Magento™**
Open Source eCommerce

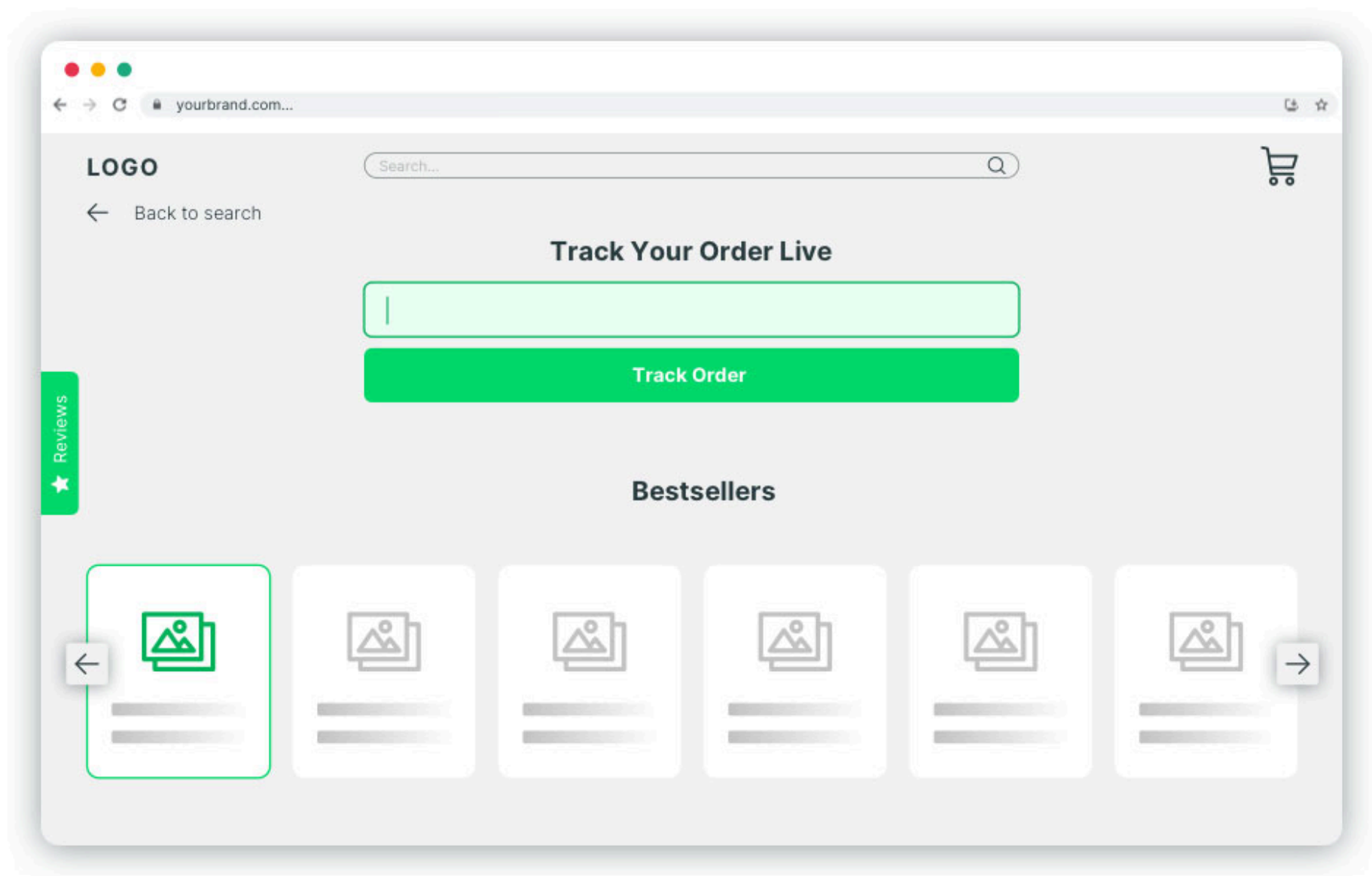
 **Bigcommerce**

OUR PREMIUM FEATUERS INCLUDE SAME
DAY COD REMITANCE



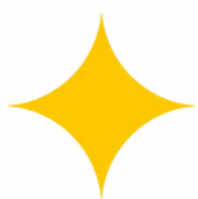
Early COD Remittance

Improve Your customer experience With Real Time Tracking & Notification



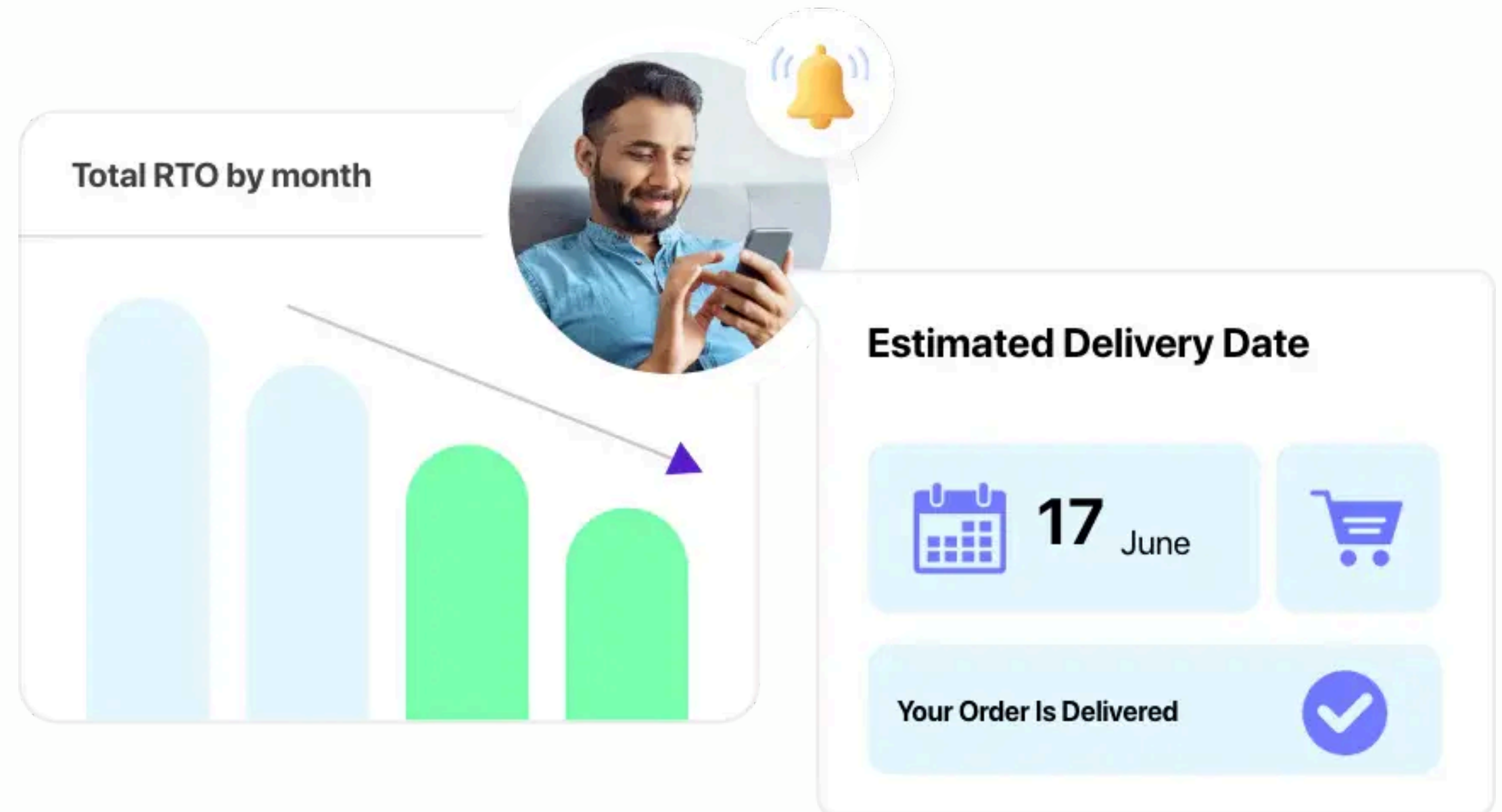
DELIVER: DO0001

New MSG: Your Shipment with AWB
Number i12312XXX is arriving today,
please be available in your home



Ai Analytics for Productivity of your ECommerce Business

- Monthly Analysis Reports
- Daily MIS
- COD Remitanec reports
- Growth Tracking Dashboard





Get In Touch

Email

hello@shipeasy.tech

Social Media

[@shipeasy.tech](https://www.instagram.com/shipeasy.tech)

Call us

+91 86078 92279

Office Address:

Service Rd, Block A, Greenwood City, Sector 45,
Gurugram, Haryana 122003 Plot number - 2027 , 2nd floor

15th Floor, Arch Square X2, Sector V, Kolkata